

ELECTRONIC STRUCTURE OF $A_2\text{FeReO}_6$ DOUBLE PEROVSKITES PROBED WITH Re 2p RXES

M. Sikora*

AGH University of Science and Technology, Av. Mickiewicza 30, 30–059 Kraków, Poland

Keywords: electronic structure, rhenium compounds, magnetoresistive double perovskites, RXES, RIXS

*e-mail: marcin.sikora@agh.edu.pl

Ordered double perovskites $A_2BB'O_6$ (A = alkaline earth metals, $B = 3d$ transition metal, and $B' = 3d, 4d$, or $5d$ transition metal) reveal extraordinary properties in terms of their potential application in magnetoelectronics, namely large spin polarization of the electrical carriers, significant magnetoresistance at room temperature and high Curie temperature [1]. The $B = \text{Re}$ double perovskites show strong magneto-structural coupling as well as an unexpected increase in the Curie temperature with decreasing $B-O-B'$ angle and, thus, a reduction in the effective d -electron hopping integral. Such behavior, that is in contrast to other transition-metal oxides, is attributed to the interplay between structural degrees of freedom with unquenched Re orbital moment [2], giving rise to a competition between the octahedral ligand field and the strong spin-orbit coupling in the $5d$ orbitals.

Here we show an attempt to verify these assumptions employing high resolution X-ray spectroscopy

to probe the element specific electronic structure of double perovskites and its evolution upon decreasing $B-O-B'$ angle, i.e. going from $A = \text{Ba}$, through Sr to Ca. $2p$ Resonant X-ray Emission Spectroscopy (RXES) and $2p5d$ Resonant Inelastic X-ray Scattering (RIXS) have been applied providing us with detailed information on electronic structure of core levels and valence band, respectively, with bulk sensitivity.

We observe that Re-probed electronic structure of core levels, even the shallow ones, is insensitive to local environment. Also the bandwidth of valence band does not show significant differences among the compounds studied. However, the splitting of the features in unoccupied electronic structure as well as intensity and fine structure of the spectral features reveal gradual evolution upon decreasing of $B-O-B'$ angle (Fig. 1). Detailed analysis of the spectral shape of $2p5d$ RIXS will be performed following the approach of Nikolay Smolentsev *et al.* [3].

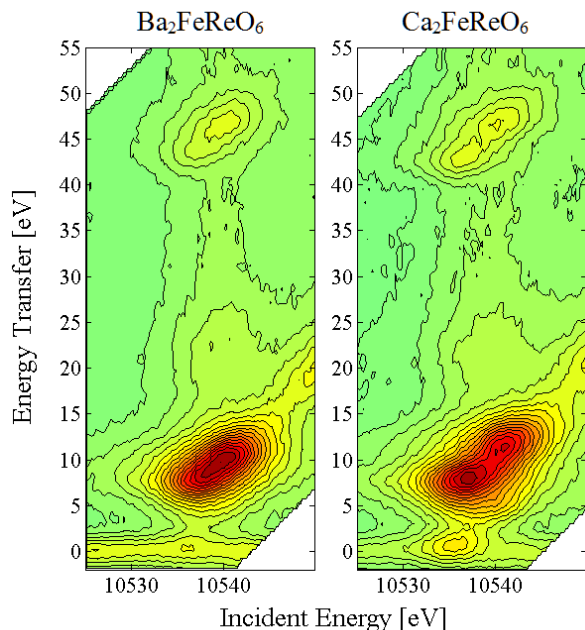


Figure 1: Contour plots of the $2p5d$ RIXS in $\text{Ba}_2\text{FeReO}_6$ (left) and $\text{Ca}_2\text{FeReO}_6$ (right) probed at Re L_3 -edge.

Acknowledgments: European Synchrotron Radiation Facility, Grenoble, is acknowledged for provision of beamtime. We thank the ID26 staff for help in setting up the experiment. Financial support from the Polish Ministry of Science and Higher Education, grants ESRF/73/2006 and N N202 071539, is acknowledged.

References

- [1] D. Serrate, J.M. De Teresa, M.R. Ibarra, "Double perovskites with ferromagnetism above room temperature," *J. Phys.: Condens. Matter* **19** (2007) 023201.
- [2] M. Sikora, O. Mathon, P. van der Linden, J.M. Michalik, J.M. de Teresa, Cz. Kapusta, S. Pascarelli, "Field-induced magnetostructural phase transition in double perovskite $\text{Ca}_2\text{FeReO}_6$ studied via x-ray magnetic circular dichroism," *Phys. Rev. B* **79** (2009) 220402.
- [3] N. Smolentsev, M. Sikora, A.V. Soldatov, K.O. Kvashnina, P. Glatzel, "Spin-orbit sensitive hard x-ray probe of the occupied and unoccupied $5d$ density of states," *Phys. Rev. B* **84** (2011) 235113.