

## Membership of Poland in ESRF

K. Jablonska<sup>1</sup>

<sup>1</sup>*Institute of Physics, Polish Academy of Sciences, Warsaw, Poland*

\*e-mail: jablo@ifpan.edu.pl

Starting from year 2004, Poland is an Associated Member of the European Synchrotron Radiation Facility (ESRF) in Grenoble, France. In the period from 2004-2006 with the contribution at the level of 0.6% of ESRF budget and in the period 2006-2011 at the level of 1%. Starting from October 2011 there was no a legal path to apply for paying the Polish contribution. Nevertheless, Polish government has declared that is working on solving this problem and the necessary changes in the law will be made but any agreement between Poland and ESRF was signed. In the absence of a valid agreement, securing the necessary funding was no longer possible. However, activities for the establishment of a new legal and financial mechanism enabling the renewal of the long-term arrangement have been actively ongoing since October 2011. Moreover, the Polish scientific community has continued to successfully use the ESRF at the same level as before and Polish post-docs and PhD students have continued to be welcomed in the ESRF staff complement, despite the fact that no formal arrangement has been in force between the Parties since October 2011 and that IF PAN (as representative of Poland) has not made any financial contribution to the ESRF during this period.



Figure 1. View of the ESRF synchrotron from above. (Image courtesy ESRF)

On 25 May 2015, an amended act on the financing of research in Poland entered into force and was published in the official bulletin of the Polish Government under the reference Dz. U z 2015 r. poz. 249. The appropriate regulation was published on 7 December 2015. These acts include the legal instruments enabling the Polish Ministry of Science and Higher Education to finance the participation of Polish institutions in international research infrastructures. The situation is now such that IF PAN has access to a formal procedure to renew its Scientific Association with the ESRF for a 5-year period

and, additionally, make the financial contribution necessary to cover the period 01 October 2011 to 31 March 2016, in which the continued use of the ESRF by Poland took place. Therefore, the application for the funds to pay outstanding contribution and contribution up to 2020 was submitted to the Ministry of Science and High Education by IF PAN. This application was sent by IF PAN as the leader of the Consortium of Institutions Interested in the Use of ESRF. This Consortium was established on 16 March 2006 with 7 members. Next year two institutions were joined the Consortium and in this year 11 institutions have declared access to the Consortium. At the time of application Consortium was made up by 20 following institutions:

1. Instytut Fizyki PAN w Warszawie
2. Instytut Neurologii, Collegium Medium Uniwersytetu Jagiellońskiego w Krakowie
3. Wydział Fizyki i Informatyki Stosowanej Akademii Górniczo-Hutniczej w Krakowie
4. Wydział Fizyki Technicznej i Matematyki Stosowanej, Politechniki Gdańskiej
5. Instytut Chemii Fizycznej PAN w Warszawie
6. Instytut Fizyki Uniwersytet Śląski w Katowicach
7. Instytut Fizyki Doświadczalnej Uniwersytetu Warszawskiego
8. Wydział Chemii Uniwersytetu Warszawskiego
9. Instytut Paleobiologii PAN w Warszawie
10. Wydział Chemii Uniwersytet Adama Mickiewicza
11. Instytut Chemii i Techniki Jądrowej
12. Instytut Materiałów Inżynierskich i Biomedycznych, Politechnika Śląska
13. Instytut Wysokich Ciśnień PAN, Unipress
14. Wydział Fizyki, Uniwersytet w Białymstoku
15. Wydział Chemii, Politechniki Warszawskiej
16. Wydział Fizyki, Uniwersytet Adama Mickiewicza
17. Wydział Fizyki, Politechniki Warszawskiej
18. Instytut Fizyki Jądrowej Polskiej Akademii Nauk
19. Instytut Metalurgii i Inżynierii Materiałowej im Aleksandra Krupkowskiego Polskiej Akademii Nauk
20. Instytut Optoelektroniki, Wojskowa Akademia Techniczna w Warszawie

Nevertheless, each scientist affiliated in Polish scientific institution can apply for beamtime, regardless of being the member of Consortium.

More than 40 papers have been published per year by the scientists from Polish institutions performing experiments at the ESRF in the period when Poland was

not paid the contribution (see Figure 2). It is only slightly lower than it has been when Poland paid contribution (50).

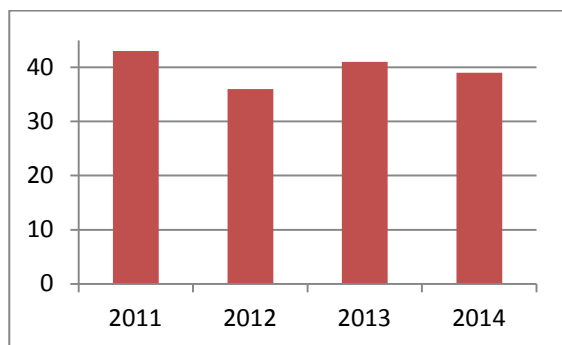


Figure 2. Polish papers with use of ESRF.

We do hope that application will be successful and soon Polish representatives will attend the meetings of the Council and the Financial and Administrative Committee at ESRF as it was before. Therefore, we strongly encourage all Polish scientists to submit the scientific proposals to ESRF. The next deadline is 10 September 2016. Moreover, have a look on the ESRF webpage, <http://www.esrf.eu> and check the possibility to apply for PhD and postdocs or technical positions. As soon as the IF PAN application will be approved the information about such possibilities you will find also at the updated page of the related project [http://info.ifpan.edu.pl/esrf/Local\\_Publish/](http://info.ifpan.edu.pl/esrf/Local_Publish/).

In addition, everyone should be aware that paying the Polish contribution is a kind of scientific project. Therefore, the Ministry will be asked for various details concerning the use of ESRF. The IF PAN will be obligated to provide the list of institutions applying for and getting the beamtime and the corresponding numbers of applied and allocated shifts. Please be aware, that if your name is appearing in the approved international project and even you are not taking part in the performed experiment still the appropriate part of beamtime is counted for Poland (the number of shifts is divided by the number of countries in the project).

You will be asked also to send to IF PAN a short report from the performed experiment and later a list of publications resulting from performed experiments together with the corresponding journal impact factors as

well as a list of conference presentations, doctoral theses *etc.* Therefore, I am taking this opportunity to ask all of ESRF Polish users to remember regularly visit the webpage of the project and systematically inform us about all papers, doctoral theses and conference presentations with contribution of data collected at ESRF. The appropriate acknowledge of the project should be also explicitly exposed in the papers and conference presentations. Following this way and providing all necessary data is crucial for the further access to ESRF. Realization of project will be evaluated each year and only after positive evaluation the project be continued. Moreover, please distinguish between the ESRF access which is paid by Polish Ministry of Science and High Education and access to European national synchrotrons e.g. Elettra, Soleil, Alba, Bessy or Petra which is supported by the European project paid by the European Commission. Starting from May 2015, there is no such project but Calipso-plus was submitted in March 2016 after 2 year fight of the European Synchrotron Users Organization (ESUO) with the EC for opening the appropriate call.

I wish you all success in getting the beamtime.

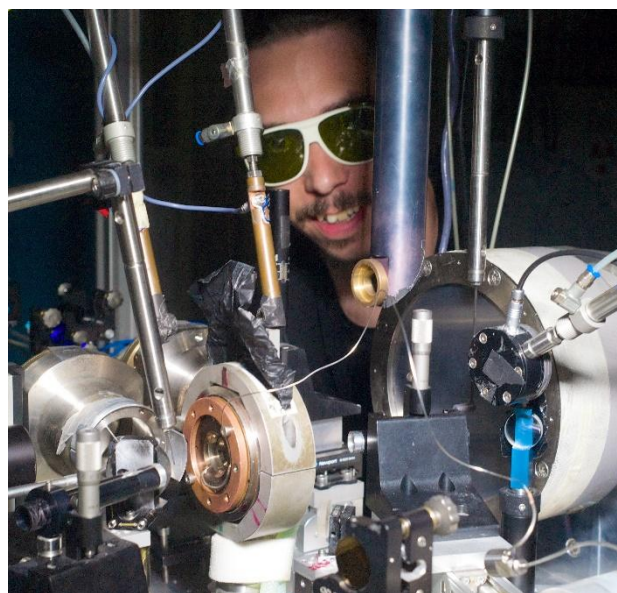


Figure 3. Experiment at one of ESRF beamlines (ID27). (Credits ESRF/Blascha Faust)